

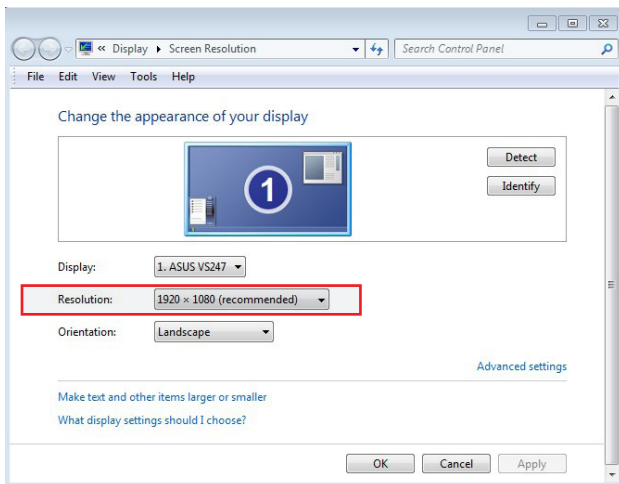


High Resolution USB 3 Camera

USB 3.0 Super Speed Camera Installation Sheet

Note: The Clemex software must be installed before installing the camera.

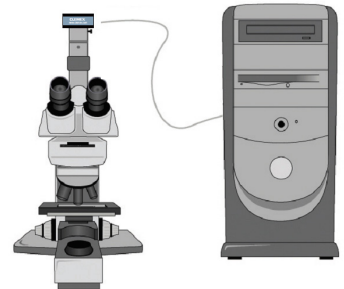
1. Please ensure that you have a **USB 3.0** port on you PC.
2. Right-click on your Desktop to access the **Screen Resolution** Window and check that your screen resolution is set at a minimum of 1920 x 1080.



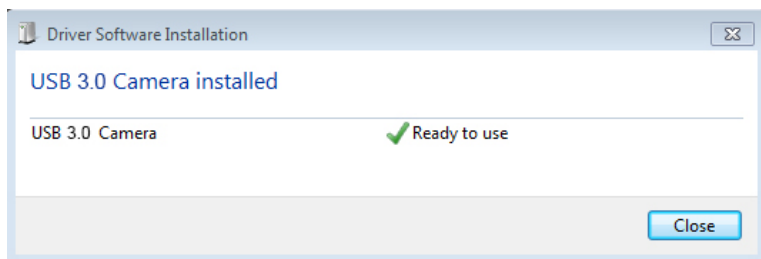
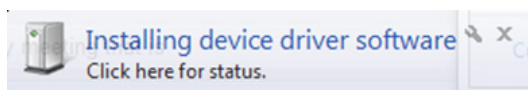
3. Plug the Clemex High Resolution USB 3.0 camera in any available USB 3.0 port.

CAUTION

*If you connect your camera to a non USB 3.0 port
your camera may not work.*



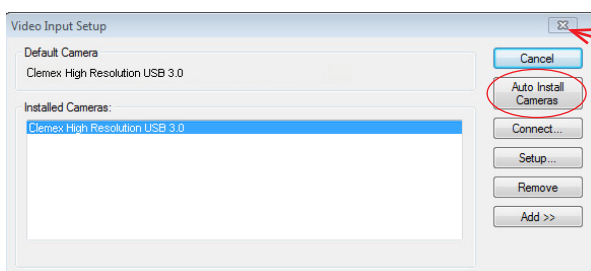
4. The computer installs the appropriate device driver software and tells you when it is finished.



5. To synchronise the camera with the Clemex software, open the **Video Input Setup** program which is found in the **Clemex Image Analysis** folder on your desktop.



6. Click **Auto-Install Camera**. The camera details appear. Click to close the window.



7. Run your Clemex software by double-clicking on the appropriate icon (Clemex Captiva, Clemex Vision Lite, Clemex Vision PE, Clemex CMT.HD or Clemex CIR) in the **Clemex Image Analysis** folder on your desktop.

