

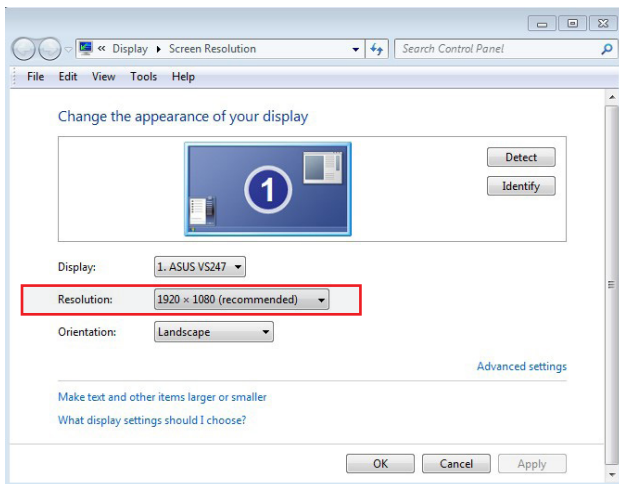


ST USB2 Camera

USB 2.0 High Speed Camera Installation Sheet

Note: The Clemex software must be installed before installing the camera.

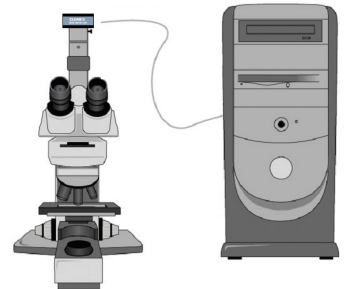
1. Please ensure that you have a **High Speed USB 2.0** port on you PC.
2. Right-click on your Desktop to access the **Screen Resolution** Window and check that your screen resolution is set at a minimum of 1920 x 1080.



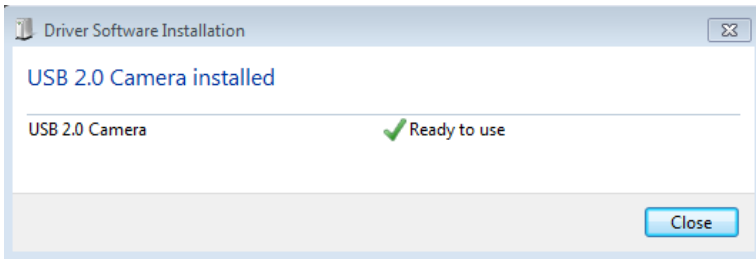
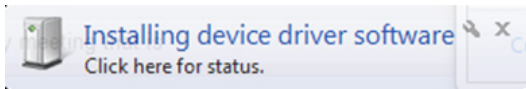
3. Plug the Clemex ST USB2 camera in any available USB 2.0 port.

CAUTION

If you connect your camera to a non USB 2.0 USB port your camera may not work.



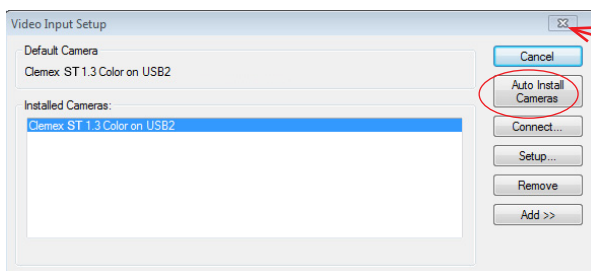
4. The computer installs the appropriate device driver software and tells you when it is finished.



5. To synchronise the camera with the Clemex software, open the **Video Input Setup** program which is found in the **Clemex Image Analysis** folder on your desktop.



6. Click **Auto-Install Camera**. The camera details appear. Click to close the window.



7. Run your Clemex software by double-clicking on the appropriate icon (Clemex Captiva, Clemex Vision Lite, Clemex Vision PE, Clemex CMT.HD or Clemex CIR) in the **Clemex Image Analysis** folder on your desktop.

