

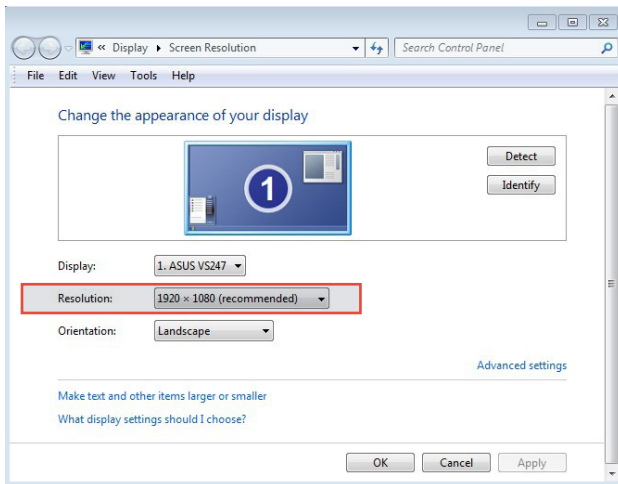
Clemex ST Mini 1.3 CCD BW Camera

USB 2.0 high speed camera installation sheet

Note: The Clemex software must be installed before installing the camera.

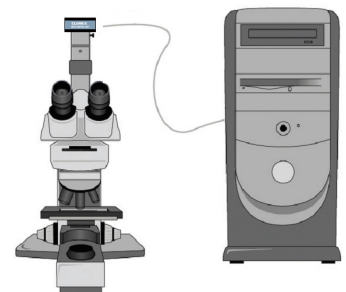


1. Please ensure that you have a **High Speed USB 2.0** port on you PC.
2. Right-click on your Desktop to access the **Screen Resolution** Window and check that your screen resolution is set at a minimum of 1920 x 1080.



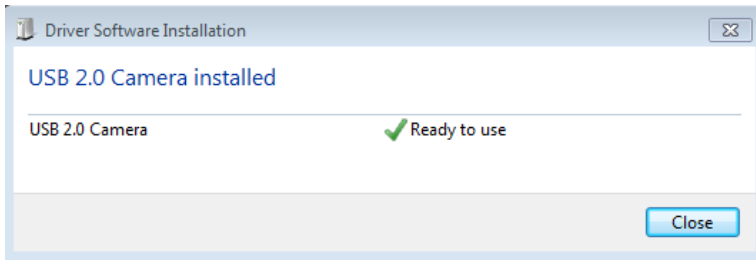
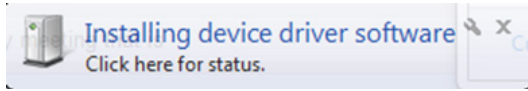
3. Plug the Clemex ST Mini 1.3 CCD BW camera in any available USB 2.0 port.

CAUTION
If you connect your camera to a non USB 2.0 USB port
your camera may not work.

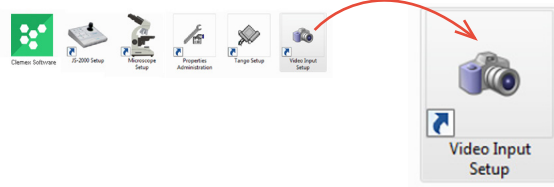


Clemex ST Mini 1.3 CCD BW Camera

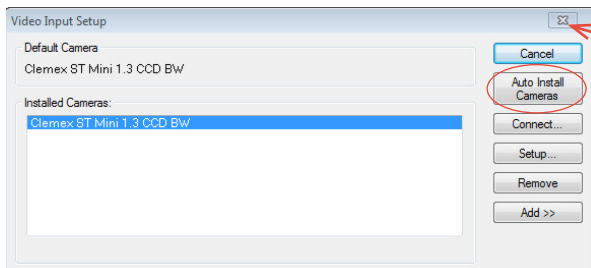
4. The computer installs the appropriate device driver software and tells you when it is finished.



5. To synchronise the camera with the Clemex software, open the **Video Input Setup** program which is found in the **Clemex Image Analysis** folder on your desktop.



6. Click **Auto-Install Camera**. The camera details appear. Click to close the window.



7. Run your **Clemex Software** by double-clicking on the icon in the Clemex Software folder on your desktop.



Clemex Software